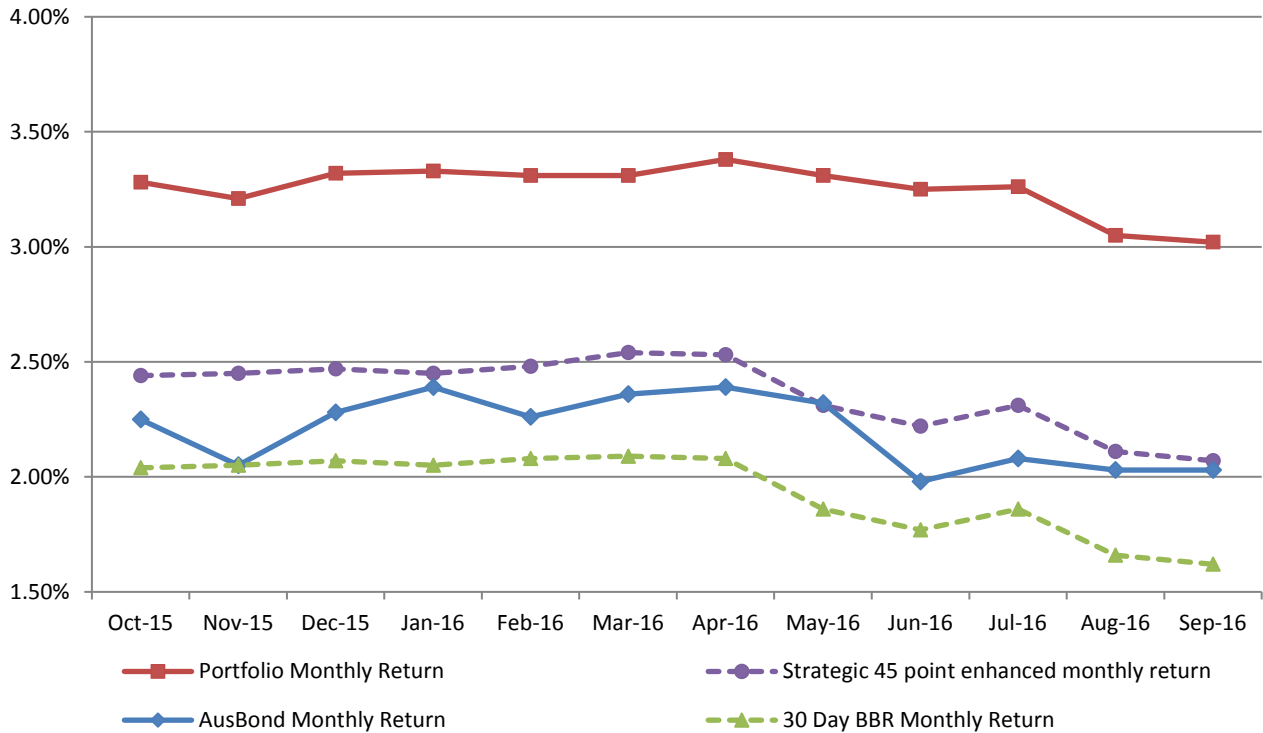


ATTACHMENT B

**INVESTMENT PERFORMANCE
AS AT 30 SEPTEMBER 2016**

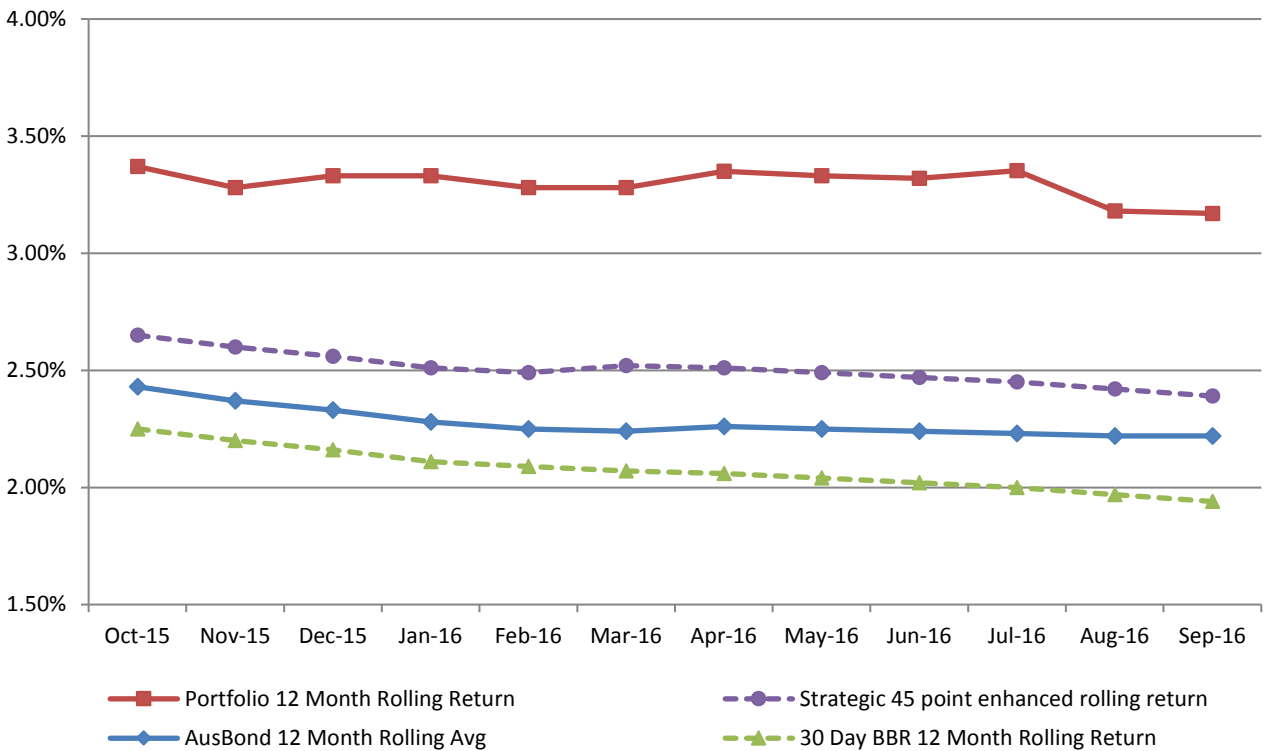
Monthly Results

Actual Portfolio vs Strategic Enhanced Benchmark vs AusBond Benchmark vs 30 Day BBR Benchmark
September 2016

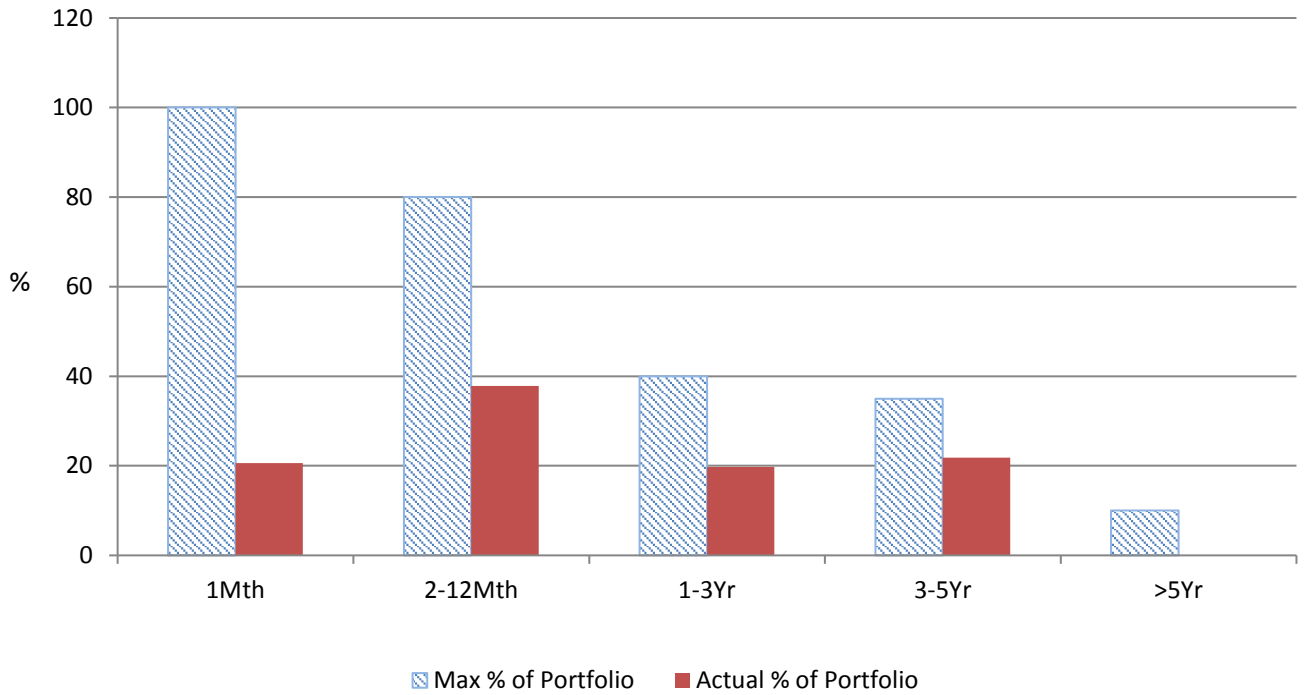


12 Month Rolling Averages

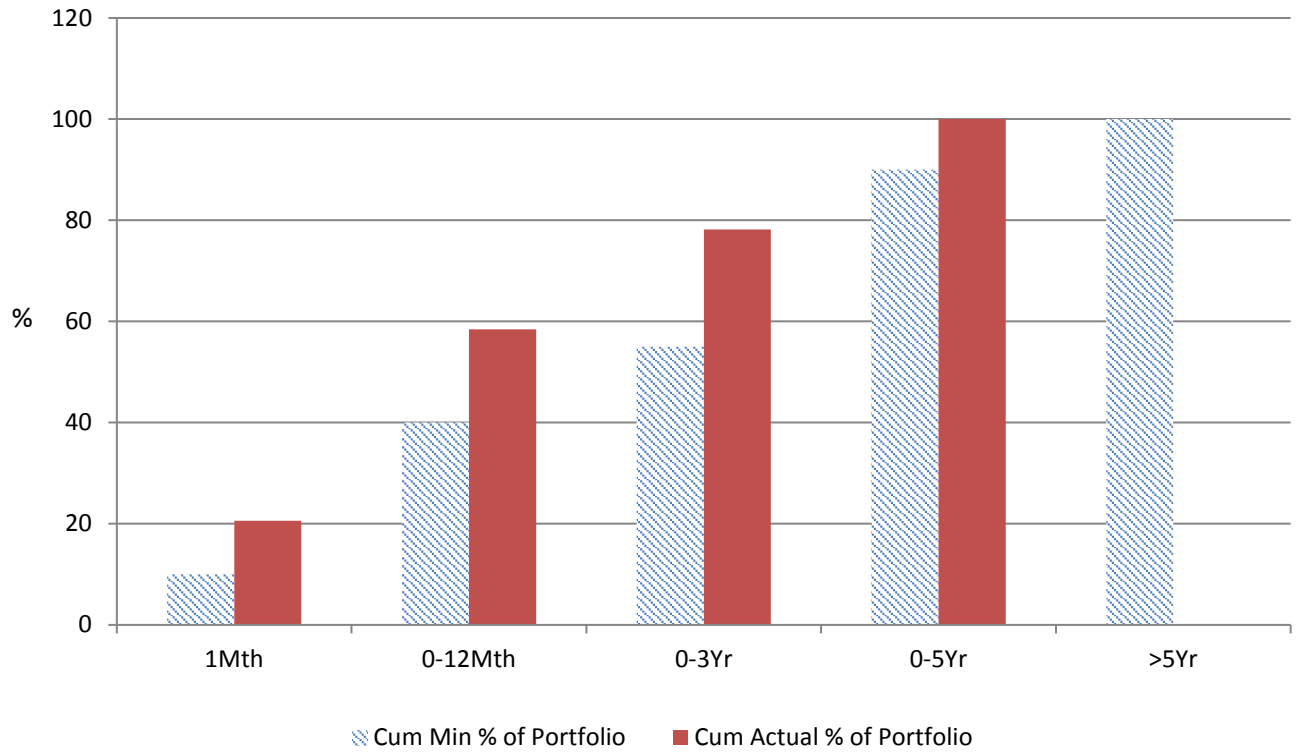
Actual Portfolio vs Strategic Enhanced Benchmark vs AusBond Benchmark vs 30 Day BBR Benchmark
September 2016



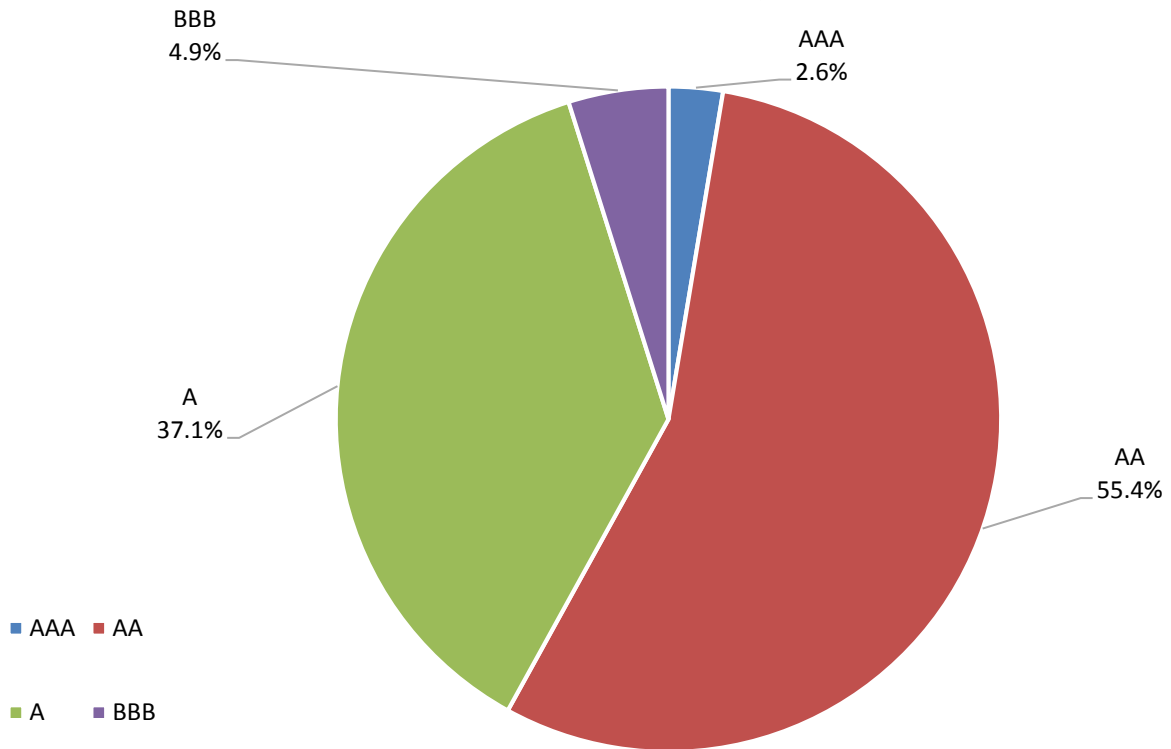
% Liquidity - Maximum Allowances



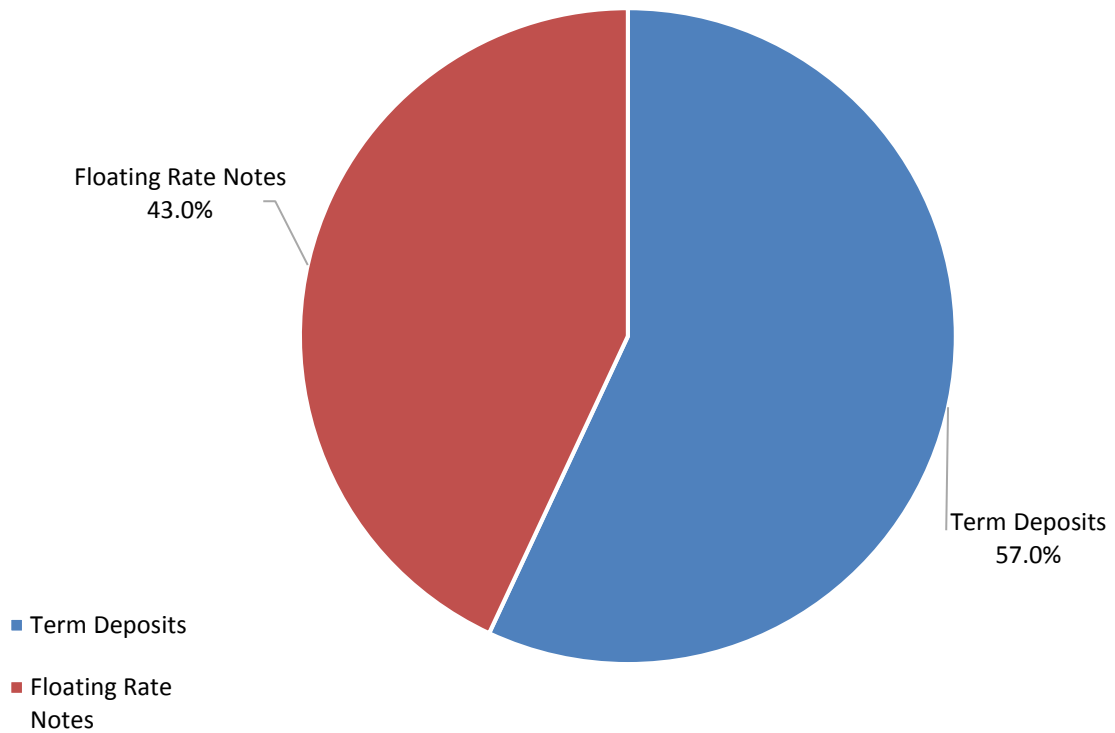
% Liquidity - Minimum Allocations



Risk Profile as at 30 September 2016



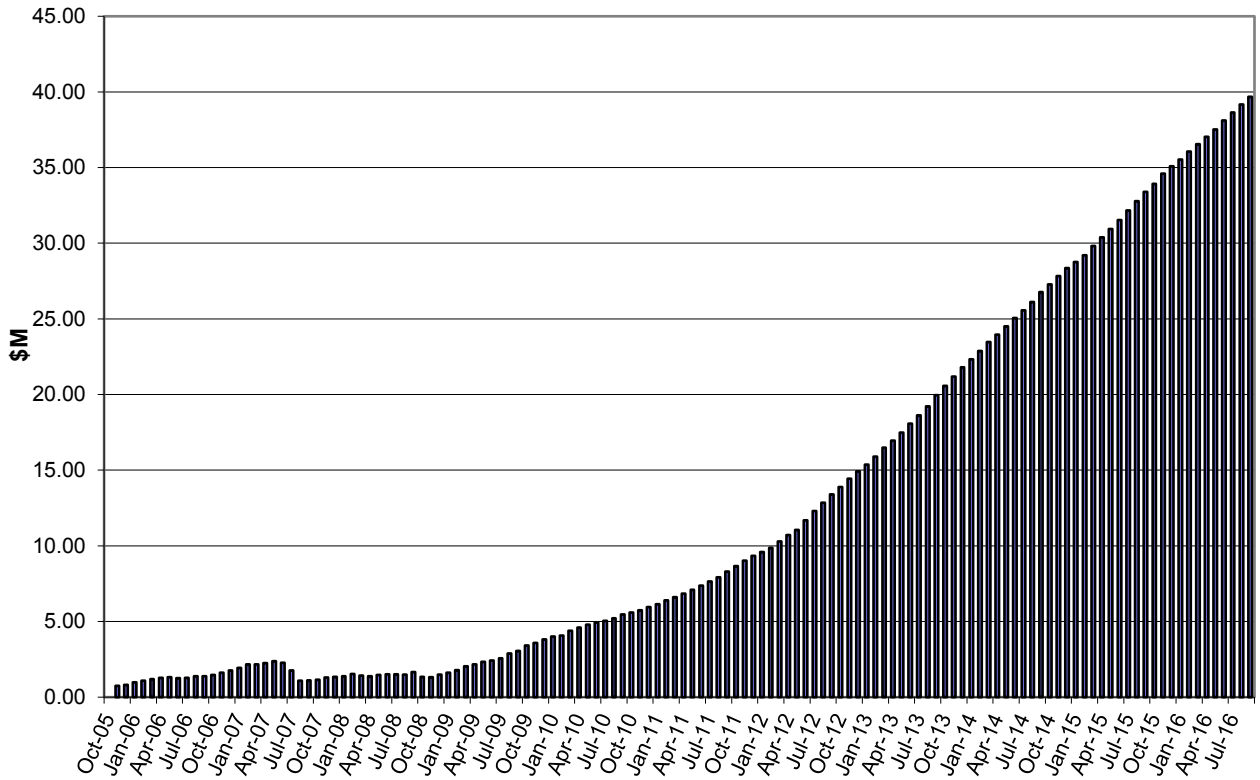
Investment Product Profile as at 30 September 2016



**INVESTMENT AND CASH DISTRIBUTION BY FINANCIAL INSTITUTION
AS AT 30 SEPTEMBER 2016**

Institution Category	Financial Institution	Amount \$M	Financial Inst. %	Institution Cat. %
Australian Big 4 Bank (and related institutions)	ANZ Bank	41.3	6.8	
	Commonwealth Bank-related:	106.0	17.3	
	<i>Bankwest</i>	20.0	3.3	
	<i>Commonwealth Bank</i>	86.0	14.1	
	National Aust Bank	74.0	12.1	
	Westpac Banking Corporation-related:	125.9	20.6	
	<i>St George Bank</i>	0.0	0.0	
	<i>Westpac Banking Corporation</i>	125.9	20.6	
Big 4 Total		347.2		56.8
Other Australian ADIs and Australian subsidiaries of foreign institutions	AMP Bank Ltd	5.0	0.8	
	Bendigo and Adelaide Bank	26.0	4.3	
	Bank Of Queensland	48.0	7.8	
	Members Equity Bank	42.0	6.9	
	IMB	10.0	1.6	
	Heritage Bank	2.0	0.3	
	Newcastle Permanent Building Society	37.0	6.0	
	CUA Limited	35.0	5.7	
	ING Bank	0.0	0.0	
	Greater Building Society	5.0	0.8	
	Bank of Communication	5.0	0.8	
	Rabobank	0.0	0.0	
	Suncorp Bank	35.0	5.7	
	Bank of China-Sydney Branch	5.0	0.8	
Royal Bank of Canada - Sydney	9.5	1.6		
Other ADI Total		264.5		43.2
Grand Total		611.7	100.0	100.0

Cumulative Outperformance over AusBond Benchmark - 2005-2016



Cumulative Outperformance over 30 Day BBR Benchmark - 2005-2016

